



Governor Phil Murphy signed the Clean Energy Act of 2018 directing the New Jersey Board of Public Utilities to establish a community solar program. Residents subscribe to the electricity the project produces absent long-term contracts, costly fees, or other barriers to entry and get access to solar energy with no solar panels on their roof.

COMMUNITY SOLAR OVERVIEW

New Jersey Community Solar

- ✓ Program is overseen by the Board of Public Utilities part of the Governor's **Clean Energy Act of 2018**
- ✓ Goal - Environmental justice by investing in communities to provide:



Reducing Electricity Costs

10% discount and an additional 5% for LMI communities

Promo code: **SLNJSC**
for 15-20% discount



Cleaner Air in the Community

Prevents more than 17,000 metric tons of carbon dioxide from entering the atmosphere each year



Available to Everyone

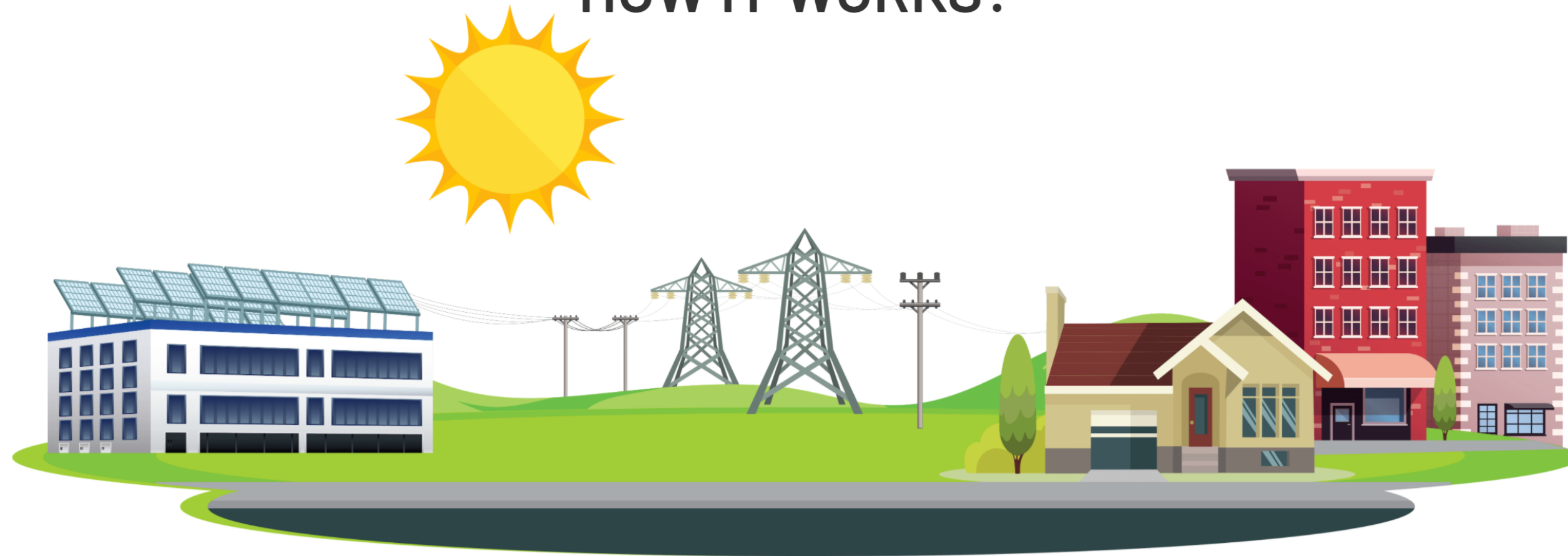
Those that can't afford or don't want panels on their roof can now have access to clean solar energy



Local Workforce Development

Through job training, job production, school enrichment, and community fundraising/education

HOW IT WORKS?



1

**Project is built to
power the community
around it**

2

**The power is fed into
the local utility grid**

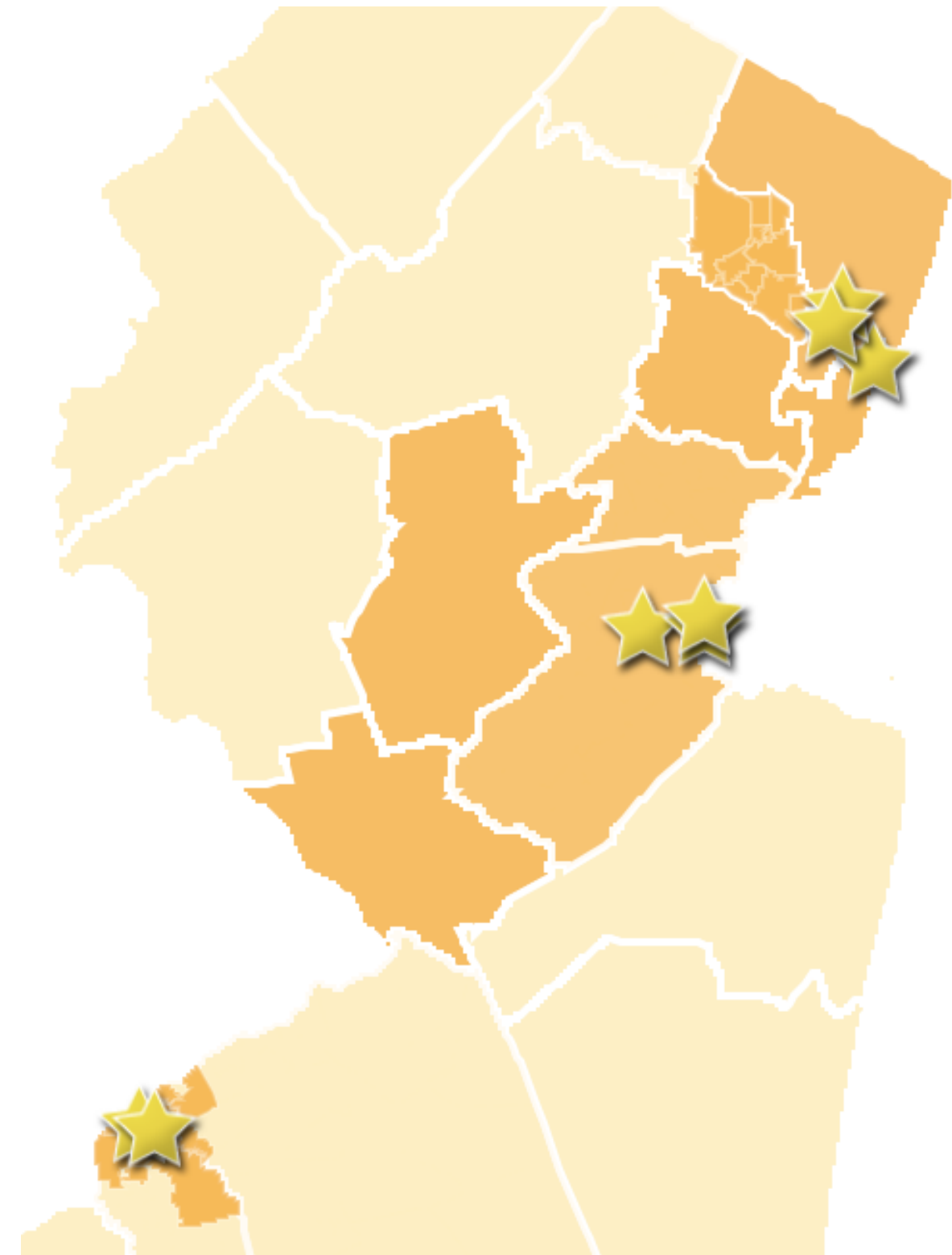
3

**Anyone in the community
can go on the project's
subscription website to get
connected and save**

Our 2019 **Approved** Community Solar Projects

Our solar projects serve the following
Locations for PSE&G customers:

- *Bergen County*
- *Essex County*
- *Hudson County*
- *Passaic County*
- *Middlesex County*
- *Mercer County*
- *Somerset County*
- *Union County*
- *Pennsauken & bordering townships*

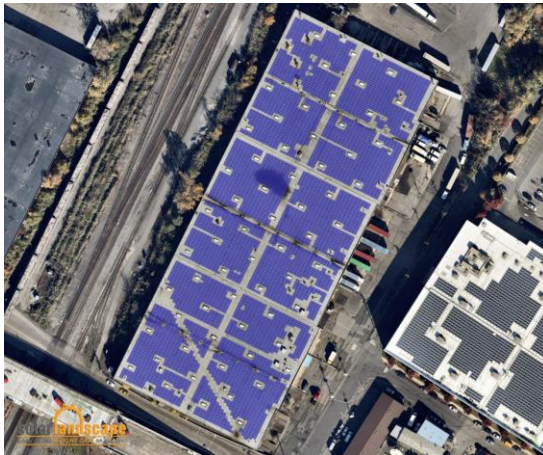


Our 2019 Approved Community Solar Projects

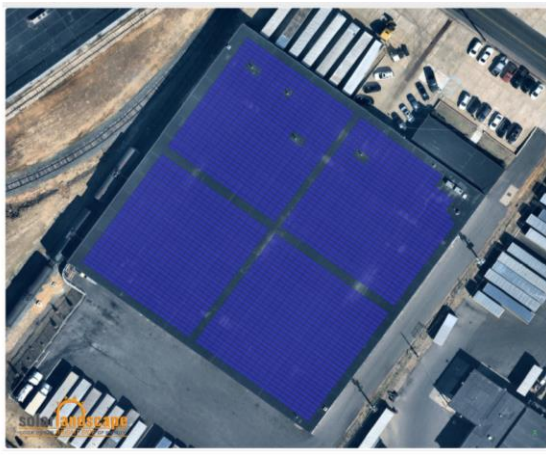
*Prevent over 17,500 metric tons of CO₂ from entering NJ's atmosphere
Enough power for +3,000 homes*



Project Site – 2900 Woodbridge Ave.
Edison , NJ



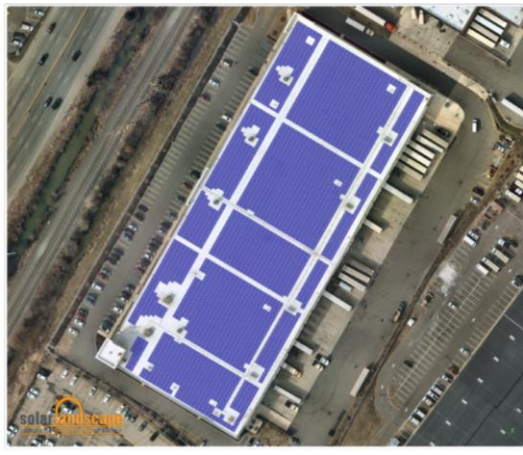
Project Site – 7001 Ansepil Drive
North Bergen



Project Site – 1005 Sherman Ave.
Pennsauken, NJ



Project Site – 7201 Westfield Ave.
Pennsauken, NJ



Project Site – 1 Catherine Street
Teterboro, NJ



960 High Street
Perth Amboy, NJ



1000 High Street
Perth Amboy, NJ



5 Ethel Blvd
Wood Ridge, NJ

Applying for a Community Solar Project:

Evaluation Criteria	Max. Points
Low- and Moderate-Income and Environmental Justice Inclusion Higher preference: LMI project	25
Siting <u>Higher preference</u> , e.g.: landfills, brownfields, rooftops, parking lots, <u>Medium preference</u> , e.g.: floating solar on water bodies <u>No Points</u> , e.g.: preserved lands, wetlands, forested areas, farmland Bonus points for site enhancements, e.g. landscaping, land enhancement, pollination support Bonus points if project is located in a redevelopment area or an economic opportunity zone	25 Max. bonus points: 3 2
Community and Environmental Justice Engagement <u>Higher preference</u> : formal agreement or ongoing collaboration with municipality/local community organizations and/or affordable housing provider <u>Medium preference</u> : consultation with municipality and/or local community organization(s) and/or or affordable housing provider <u>No Points</u> : no collaboration or collaboration has not been proven	15
Product Offering <u>Higher preference</u> : guaranteed savings >20%, flexible terms <u>Medium preference</u> : guaranteed savings >10% <u>Low preference</u> : guaranteed savings >5% <u>No Points</u> : no guaranteed savings, no flexible terms	15
Other Benefits <u>Higher preference</u> : Provides jobs/job training/demonstrates co-benefits (e.g. paired with storage, EV charging station, energy audits, energy efficiency)	10
Geographic Limit within EDC Service Territory <u>Higher preference</u> : municipality/adjacent municipality <u>Medium preference</u> : county/adjacent county <u>No Points</u> : any geographic location within the EDC service territory	5
Project Maturity <u>Higher preference</u> : project has received all non-ministerial permits; project has completed an interconnection study	5

Community Solar from the Customer's Point of View



[Home](#) [What Is Community Solar](#) [About Us](#) [FAQ](#) [Sign Up](#) [Español](#)

 **NEW**

Save 10-15% on Electricity by
Subscribing to
Solar Landscape

Are you a PSE&G customer?

Yes

No

Join Today

WELCOME
TO
THE GARDEN STATE

LMI Income Qualifications

Please review the chart below and choose the appropriate option.

I am eligible to receive a 15% discount on electricity costs if...		
NEW JERSEY	I have this many persons in my household...	...And my Total Household Income is less than:
	1	\$54,950
	2	\$62,800
	3	\$70,650
	4	\$78,500
	5	\$84,800
	6	\$91,050
	7	\$97,350
	8	\$103,600

PSEG SAMPLE BILL

SOLAR LANDSCAPE SAMPLE BILL

JANE DOE

Your account number: 1010101010

Invoice Number: 11111111111

Balance remaining from your last bill

PSE&G balance from last bill	\$198.92
<i>Less</i> Payment received February 19, 2018 – <i>thank you!</i>	-\$198.92
Balance remaining from your last bill	\$0.00

This month's charges and credits

	Gas charges - PSE&G	\$12.56
Plus	Electric charges - PSE&G	\$192.36
Plus	WorryFree Protection Plan charge - see page 5 for details	\$49.38
Plus	Community Solar Credit - see page 5 for details	-\$115.57
	This month's charges and credits	\$136.73

Total amount due by Mar 7, 2018	\$138.73
--	-----------------

! Message Center (Continued from page 1)

Si desea recibir en español una notificación de desconexión del servicio, llame al **1-800-357-2262**.

Stay connected during winter storms! PSE&G's enhanced online "Outage Center" keeps you better informed during power outages with more detailed, real-time information. To learn more, visit pseg.com/outagecenter.

Please help to keep our employees safe. Make sure the path leading to your meters and other outside electrical equipment is free of clutter, ice and snow.

Don't miss your meter reading

If you'll be away on your meter reading day, log in to **MyAccount** at pseg.com or call 1-800-622-0197 before your scheduled date, to submit your reading.

Electric & Gas Rate Information

For news about PSE&G's rate filing and upcoming public hearings visit www.pseg.com/pseandgfilings. Under applicable tax law, the State Sales and Use Tax and corporate business tax are imposed upon the energy you have used.

Page 2 of 5



ACCOUNT STATEMENT

Enrollment ID: 1010101010
Statement Date: 02/21/2020

Previous Account Balance: \$0.00	Payment Received through 02/21/20: \$0.00	Unpaid Balance: \$0.00	New Charges: \$98.23 See details below
--	---	----------------------------------	---

Current Amount Due

\$98.23

Your bank account ending in 1234 will be charged this amount on 02/28/2020.

Please contact us to verify payment information as soon as possible.

Jane Doe
123 Main Street
Anytown, NJ 00000-0000
.....

Your Utility Information	Production Period	Amount Credited on PSE&G Bill	15% Discount from Solar Landscape	New Charges
<p>PSE&G Account 12345-67890</p> <p>Jane Doe 123 Main Street</p>	01/19/2020 to 02/19/2020	<p>2.</p> <p>\$115.57</p>	\$17.34	<p>3.</p> <p>\$98.23</p>

Subtotal: \$98.23
Additional Credit: \$0.00
Total New Charges: 98.23

4. Your Savings:

 **\$17.34**
Saved This Statement

 **\$150**
Lifetime Account Savings



15%
Discount On Your
Electricity Costs



Environmental Impact

Our first-round community solar projects will offset more than 375 thousand tons of carbon emissions over 20 years.

Partnering with the Community

We want to empower local initiatives that mean the most to NJ residents. We do so by providing fundraising and support to your organization's goals

Local Job Training

Through our partnerships Solar Landscape is providing tuition free local solar energy job training.

Environmental Justice

Allow the benefits of sustainability to all communities

Discounted Energy Cost

Subscribers will pay a rate that is at least 15 or 20% less than their current PSE&G rate for electricity usage.

Local Energy

When community solar works properly, it leads to benefits that are not as quantifiable; such as civic pride.

Questions?

Yvette Viasus

Community Engagement Specialist

yvette@solarlandscape.com

862.324.2320